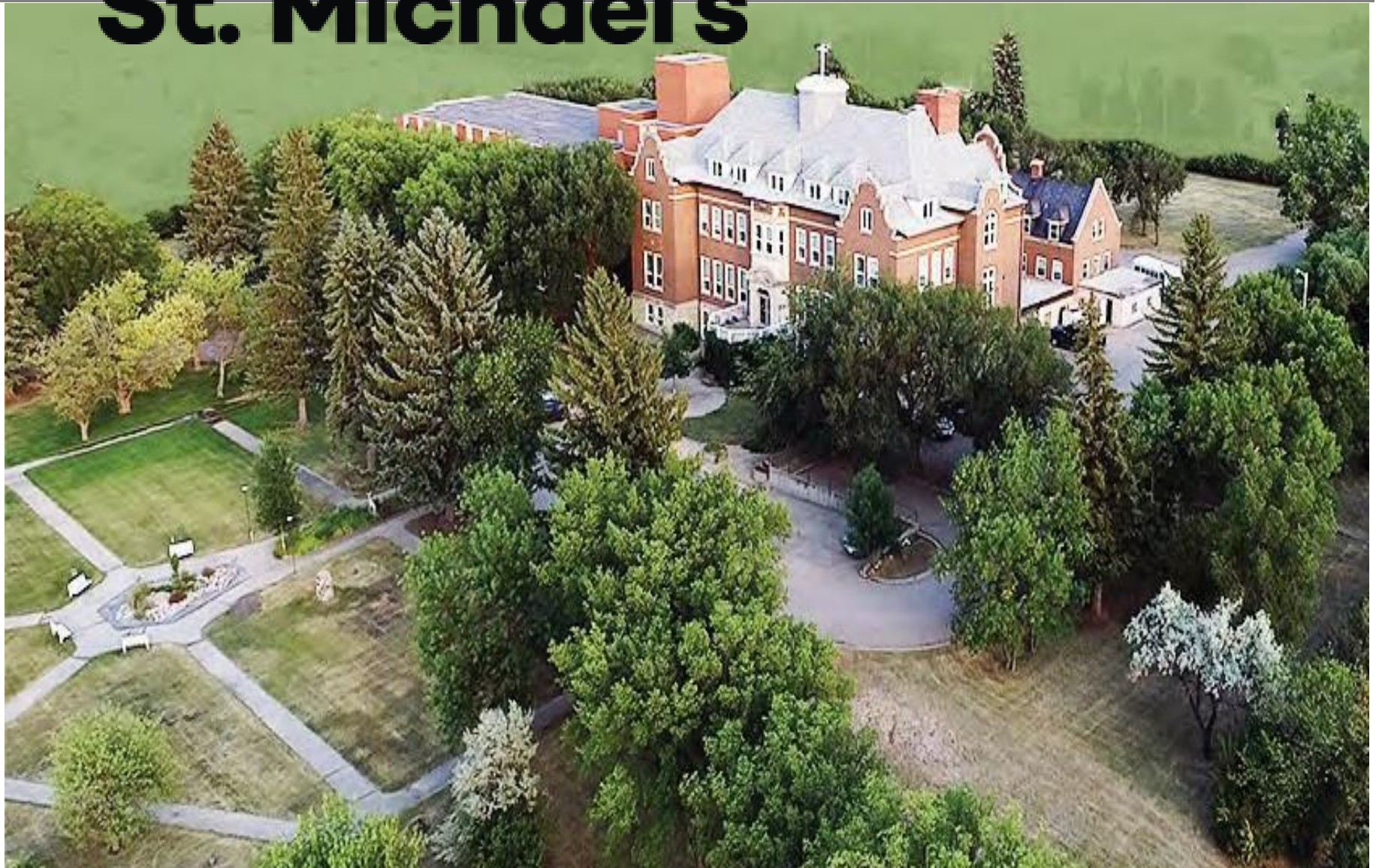




**Chateau**

**St. Michael's**

**MOOSE JAW**



**PERSONAL CARE HOME**

✓ <sup>NEW</sup> **Care Lite Suites**

✓ **Level 1 Care**

✓ **Level 2 Care**

✓ **Level 3 Care**

✓ **Level 4 Care**

✓ **Palliative Care**



*Chateau St. Michaels known for its*  
**Spectacular Garden setting &  
 Stellar Care staff...**



- ✓ Care Lite Apartments **new**
- ✓ Level 1 Care
- ✓ Level 2 Care
- ✓ Level 3 Care
- ✓ Level 4 (Higher Level) Care
- ✓ Respite & Palliative Care



**See our affordable  
 monthly Pricing!**

**Example of how Saskatchewan Personal Care Home Benefit helps...**

Calculating the PCH Benefit	Care Lite Suites \$3,200	Level 1 CARE Starting at \$3,950	Level 2 Starting at \$4,350	Level 3 CARE \$4,800	Level 4 CARE \$5,700	Palliative CARE \$5,850
<b>Monthly Income</b> such as CPP, OAS, GIS, RIFF, Interest on Savings.	Example: \$2,000	Example: \$2,000	Example: \$2,000	Example: \$2,000	Example: \$2,000	Example: \$2,000
<b>Calculate PCH Benefit</b> = \$3,500 minus your monthly income Important: Ministry of Social Services determines the amount of benefit. <u>Assets NOT included in calculating eligibility.</u>	\$1,500 ( <del>\$3,500</del> minus \$2,000)	\$1,500	\$1,500	\$1,500	\$1,500	\$1,500
<b>Monthly Cash Flow</b> Example: Resident's income including benefit.	\$3,500	\$3,950	\$3,500	\$3,500	\$3,500	\$3,500
<b>Balance Owing</b> Chateau's Services costing over \$3500/month come from resident's savings, liquidation of assets and/or family support.	<b>Care Lite Advantage:</b> Receive \$300 per month surplus	Additional \$450	<b>Pay an additional \$850</b>	Additional \$1,300	Additional \$2,200	Additional \$2,350



# Chateau St. Michael's

525 7<sup>th</sup> Ave SE. Moose Jaw

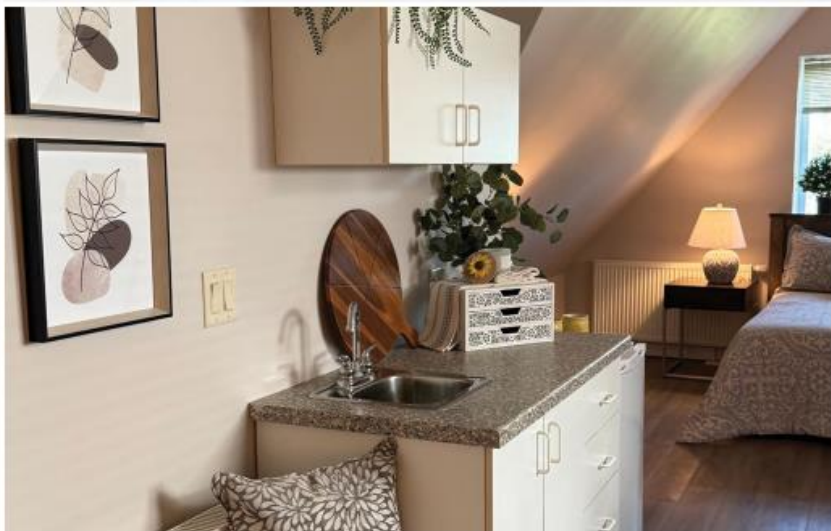
## PERSONAL CARE HOME

- ✓ Care Lite Suites 
- ✓ Level 2 Care
- ✓ Level 4 Care
- ✓ Level 1 Care
- ✓ Level 3 Care
- ✓ Palliative Care

### "Care Lite" SUITES

**\$3,200**  
per month

Includes: Suite with ensuite, all meals, housekeeping & laundry services, recreation & social program, and "Care Lite" services, such as 24-hour on-site nursing, emergency call pendant, daily care check-ins, on-site lab services. (Hair and nail care services available, pets allowed.)





COME VISIT US SOON!

New

**please tour our "Care Lite Suites"**


**\*\*And also inquire about our higher levels of Care (Levels 1-4)\*\***

**\*\* Ample Free Parking \*\***

**PICK UP YOUR APPLICATION FOR SASKATCHEWAN'S PERSONAL CARE HOME BENEFIT(PCH) (\$3,500/month)  
COVERING ALL LEVELS OF CARE. CALL DARLENE 306-693-2323 FOR MORE INFORMATION.**

*Are YOU a senior in need of a bit of help or... maybe struggling to make ends meet? Then our "Care Lite Advantage" can help! If you are a senior with a monthly income less than \$3,200/month you can enjoy the safety and security of our Care Lite services with your PCH benefit providing you with an additional **\$300.00** per month for spending.*

*Here's How It Works:*

Here are just three examples:	John is 65 years, mobile but has failing eyesight	Mary is 67 years, mobile but is struggling financially and has arthritis	Sue is 75 years, mobile but needs a bit more help
Monthly income (i.e OAS, CPP, other) Plus	\$2,000	\$740	\$3,000
Sask PCH Benefit \$3,500 less your monthly income ASSETS ARE NOT INCLUDED	\$1,500 (= \$3,500 less \$2,000)	\$2,760 (=\$3,500 less \$740)	\$500 (=\$3,500 less \$3,000)
YOUR income per month	\$3,500	\$3,500	\$3,500
Cost of Care Lite Suite per month	\$3,200	\$3,200	\$3,200
Yours to keep! \$300 "CARE LITE ADVANTAGE" 	John has an additional \$300/Month to spend!	Mary has an additional \$300/Month to spend!	Sue has an additional \$300/Month to spend!

**"Care Lite SPECIAL" – 1<sup>st</sup> MONTH FREE!**

# Home Away from Home - "Aging in Place"



*"I have a passion for working with seniors and advocate for their health, well-being and safety. We accommodate all levels of CARE, allowing seniors to "age in place". Our 54 Nurses, Continuous Care Aides and Personal Care Workers go above and beyond to ensure quality. Providing care with respect, dignity, kindness and love."*

**Bonita Allen**    *Director of Care LPN*

***Our Services include, emergency pendant, weekly on-site Doctor and Laboratory services, 24-hour nursing care and administration of medications. Our residents receive nutritious home-cooked meals, recreational and social activities, house cleaning and laundry services (Hair, nail care & transportation services available).***



# Meet our Team



**Krista Bakken**  
Activity  
Coordinator



**Darwin Ludwar**  
Maintenance



**Della Hoffman**  
Housekeeping  
Supervisor



**Darlene Lariviere**  
Operations  
Assistant



**Manon Caya**  
Administrative  
Assistant

- ✓ 24 Hour Nursing
- ✓ Care Service (Including weekly doctor & lab on-site)
- ✓ Suites / Rooms
- ✓ Housekeeping / Laundry
- ✓ Recreation / Social Programs
- ✓ Red-Seal Chef Meals (Dietary)
- ✓ Hair & Nail Care Services available
- ✓ Transportation available

**HIRING  
LPNs!**

